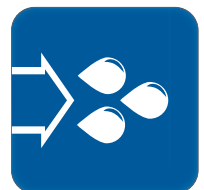


## SPARE PARTS HIGH PRESSURE WATER PUMPS



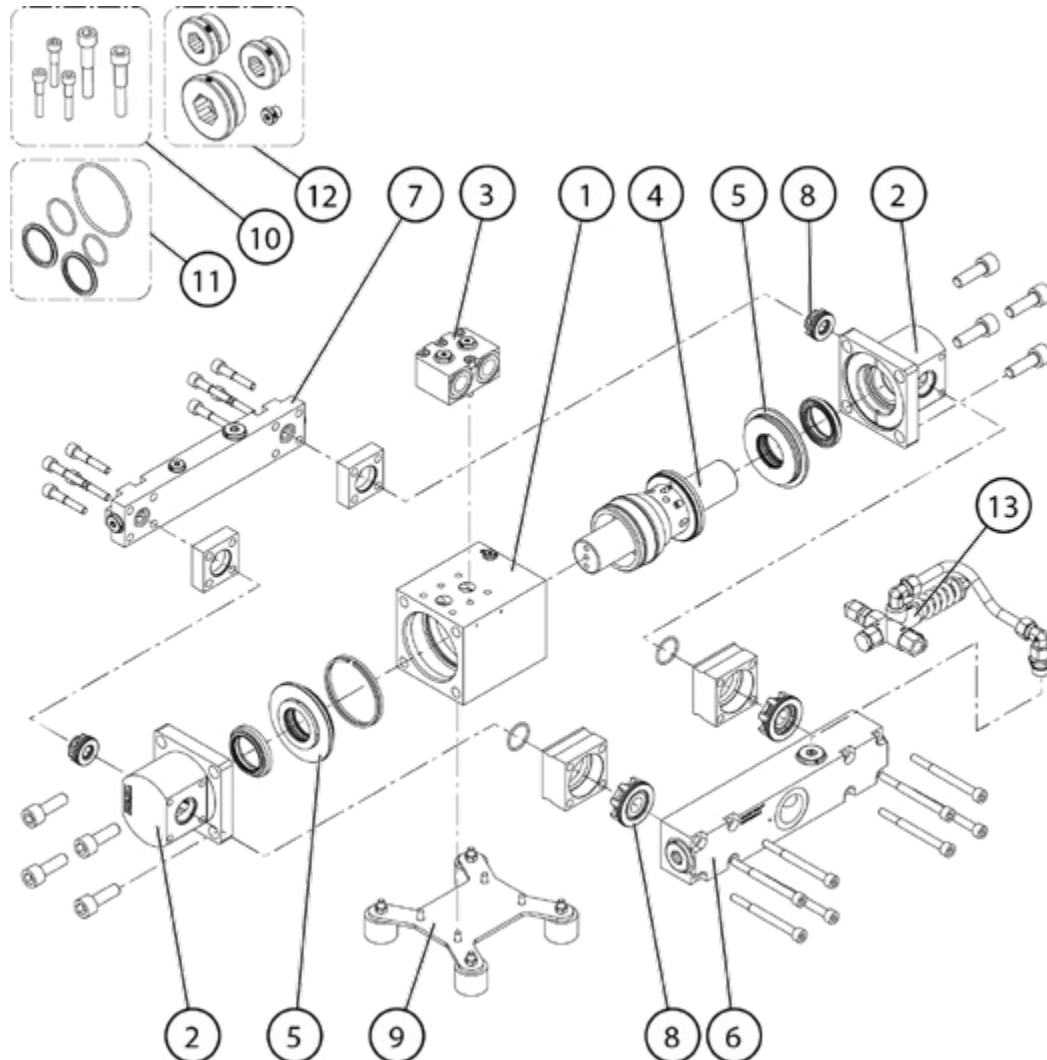
HPW 320 /75-125

HPW320\_75-125\_Spare\_Parts\_MEA-IPL1.0

## SPARE PARTS

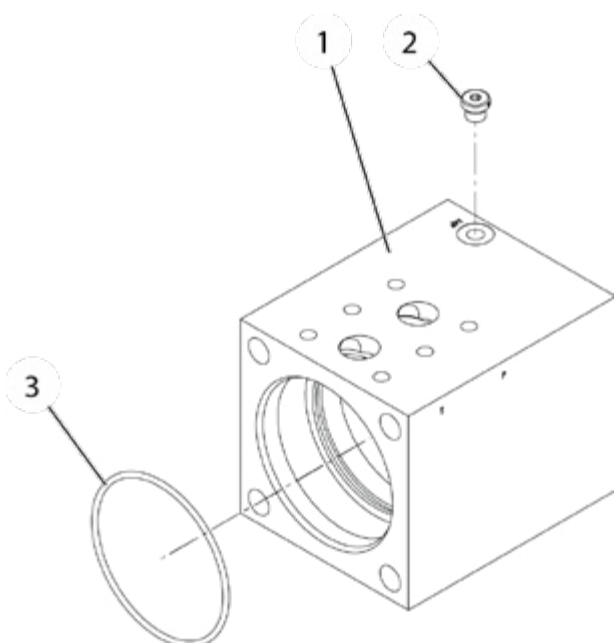
<b>MAIN COMPONENTS</b>	<b>3</b>
1. CENTER BODY	4
2. HEAD	5
3. PT BLOCK	6
4. PISTON	7
5. SEAL FLANGE	8
6. SUCTION MANIFOLD	9
7. PRESSURE MANIFOLD	10
8. WATER VALVE	11
9. MOUNTING PLATE KIT	12
10. SCREW KIT	13
11. SEAL KIT	14
12. PLUG KIT	15
13. UNLOADER VALVE	16

## MAIN COMPONENTS



POS	PART NUMBER	QTY	DESCRIPTION	DETAILS	DETAILS 2
1		1	CENTER BODY		See separate part list
2		2	HEAD		See separate part list
3		1	PT BLOCK		See separate part list
4		1	PISTON KIT		See separate part list
5		2	SEAL FLANGE		See separate part list
6		1	SUCTION MANIFOLD		See separate part list
7		1	PRESSURE MANIFOLD		See separate part list
8		1	WATER VALVE KIT		See separate part list
9		1	MOUNTING PLATE KIT		See separate part list
10			SCREW KIT		See separate part list
11			SEAL KIT		See separate part list
12			PLUG KIT		See separate part list
13			UNLOADER VALVE		See separate part list

## 1. CENTER BODY



POS	PART NUMBER	QTY	DESCRIPTION	DETAILS	DETAILS 2
1	V100 101 500		CENTER BODY		Includes pos. 2-3
2	*	1	HEXAGON SOCKET CAP PLUG	R1/8	
3	*	1	O-RING	87 x 3	

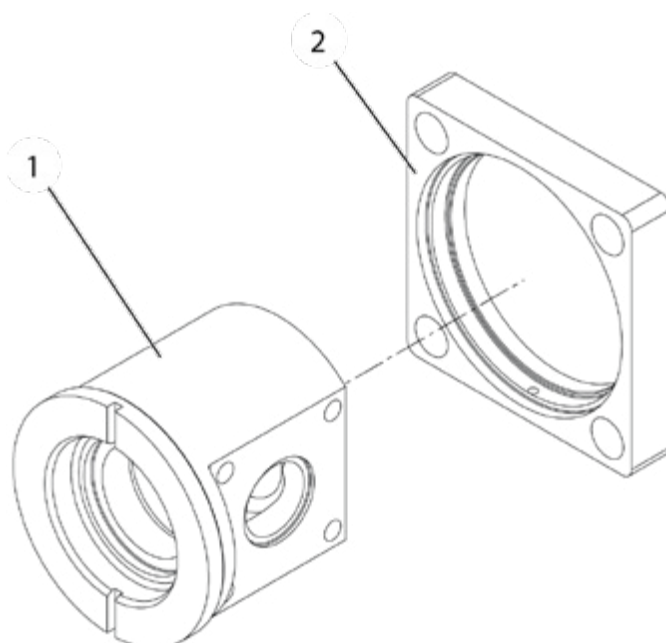
POS	PART NUMBER	QTY	DESCRIPTION	DETAILS	DETAILS 2
1	V100 101 520		CENTER BODY - AIS	Stainless steel	Includes pos. 2-3
2	*	1	HEXAGON SOCKET CAP PLUG	R1/8	Stainless steel
3	*	1	O-RING	87 x 3	

POS	PART NUMBER	QTY	DESCRIPTION	DETAILS	DETAILS 2
1	V100 101 540		CENTER BODY - SUB	Stainless steel	Includes pos. 2-3
2	*	1	HEXAGON SOCKET CAP PLUG	R1/8	Stainless steel
3	*	1	O-RING	87 x 3	

\* Not sold separately. Available only in kit or assembly described above or presented in separate part list.  
Read Details 2

Plugs are also available in Plug kit, see page 15.  
Seals are also available in Seal kit, see page 14.

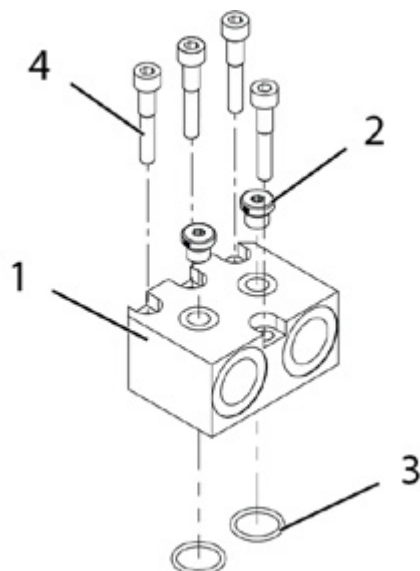
## 2. HEAD



POS	PART NUMBER	QTY	DESCRIPTION	DETAILS	DETAILS 2
1	V100 125 140	1	HEAD	Stainless steel	
2	V100 125 100	1	HEAD MOUNTING FLANGE		
2	V100 125 120	1	HEAD MOUNTING FLANGE - SUB	Stainless steel	Includes O-rings

Seals are available in Seal kit, see page 14.

### 3. PT BLOCK



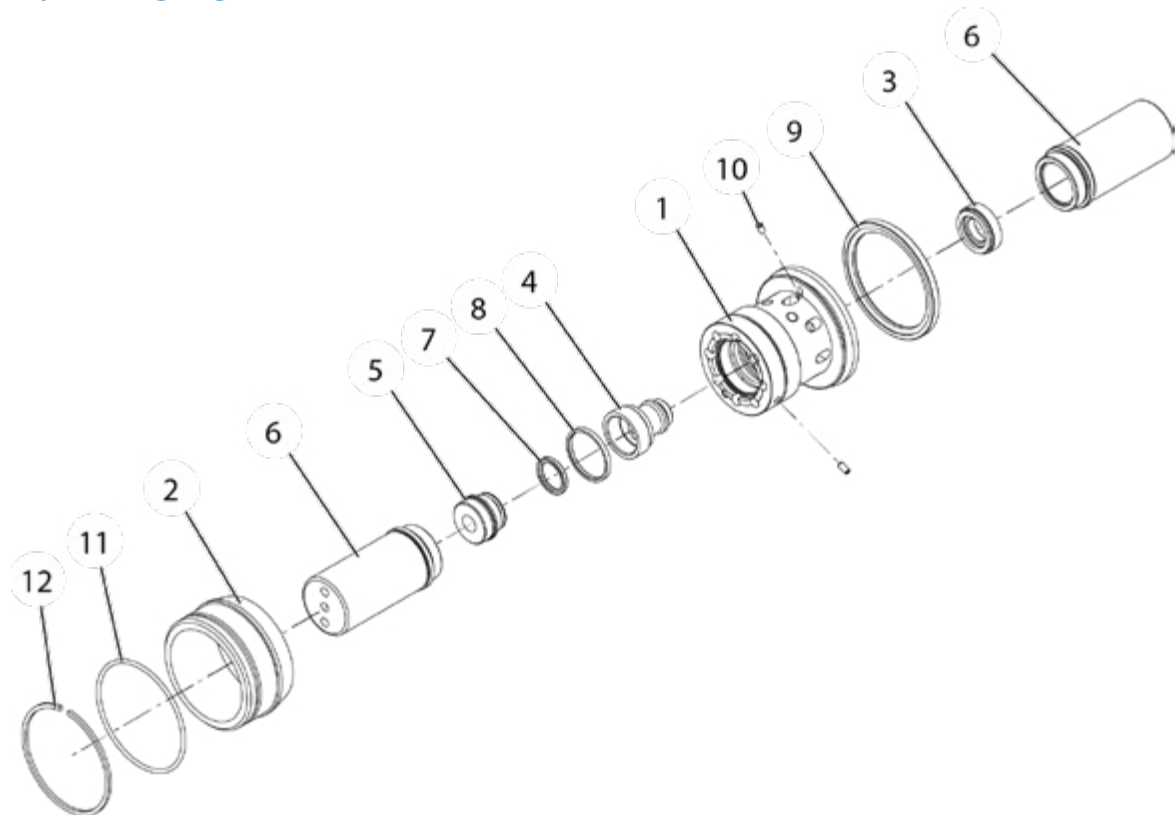
POS	PART NUMBER	QTY	DESCRIPTION	DETAILS	DETAILS 2
	<b>V100 100 710</b>		<b>PT BLOCK</b>		<b>Includes pos. 1-4</b>
1	*	1	PT BLOCK	R3/4 - St	
2	*	2	HEXAGON SOCKET CAP PLUG	R1/4	
3	*	2	O-RING	21,3 x 2,4	
4	*	4	HEXAGON SOCKET CAP SCREW	M8 x 45	

POS	PART NUMBER	QTY	DESCRIPTION	DETAILS	DETAILS 2
	<b>V100 100 720</b>		<b>PT BLOCK - AIS</b>		<b>Includes pos. 1-4</b>
1	*	1	PT BLOCK	R3/4	Stainless steel
2	*	2	HEXAGON SOCKET CAP PLUG	R1/4	Stainless steel
3	*	2	O-RING	21,3 x 2,4	
4	*	4	HEXAGON SOCKET CAP SCREW	M8 x 45	Stainless steel

\* Not sold separately. Available only in kit or assembly described above or presented in separate part list.  
Read Details 2

Seals are also available in Seal kit, see page 14.  
Screws are also available in Screw kit, see page 13.

## 4. PISTON

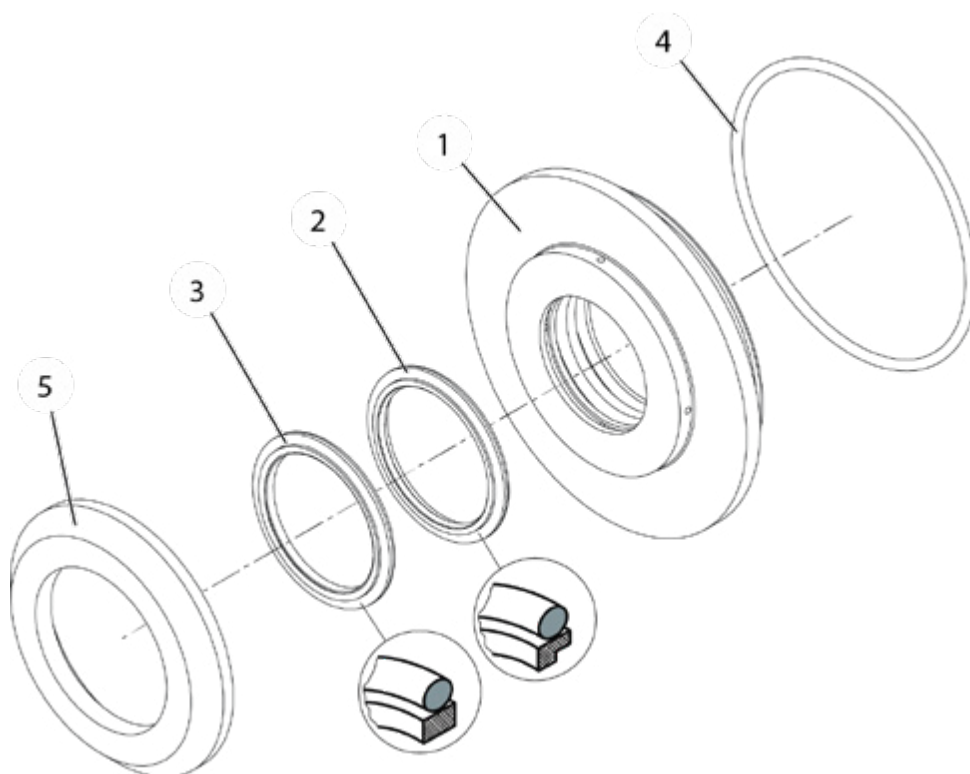


POS	PART NUMBER	QTY	DESCRIPTION	DETAILS	DETAILS 2
	V100 125 060		PISTON KIT	Piston kit includes 2 Secondary pistons	Includes pos. 1-12
1	*	1	HYDRAULIC PISTON	D90 / d71,1	
2	*	1	CYLINDER LINER	D71,1	
3	*	1	VALVE SEAT	D35,5-10,5	
4	*	1	VALVE SPLOOL	D36-41,5	
5	*	1	REVERSAL VALVE GUIDE	D34 - L23	
6	V100 125 280	1	SECONDARY PISTON	D45	
7	*	1	PISTON SEAL ASSEMBLY	M28,5	
8	*	1	ROD SEAL	36/41-3-2T	
9	*	1	PISTON SEAL ASSEMBLY	M90	
10	*	2	SET SCREW	M5 x 10	
11	*	1	O-RING	87 x 3	
12	*	1	LOCK RING	SW 85 x 2,5	
	V100 125 000		HYDRAULIC PISTON KIT	Secondary pistons excluded	Includes pos. 1-5, 7-12
	V100 101 130		HYDRAULIC PISTON SEAL KIT		Includes pos. 7-9
	V100 125 070		REVERSAL VALVE GUIDE KIT		Includes pos 7

\* Not sold separately. Available only in kit or assembly described above or presented in separate part list.  
Read Details 2

Seals are also available in Seal kit, see page 14.

## 5. SEAL FLANGE



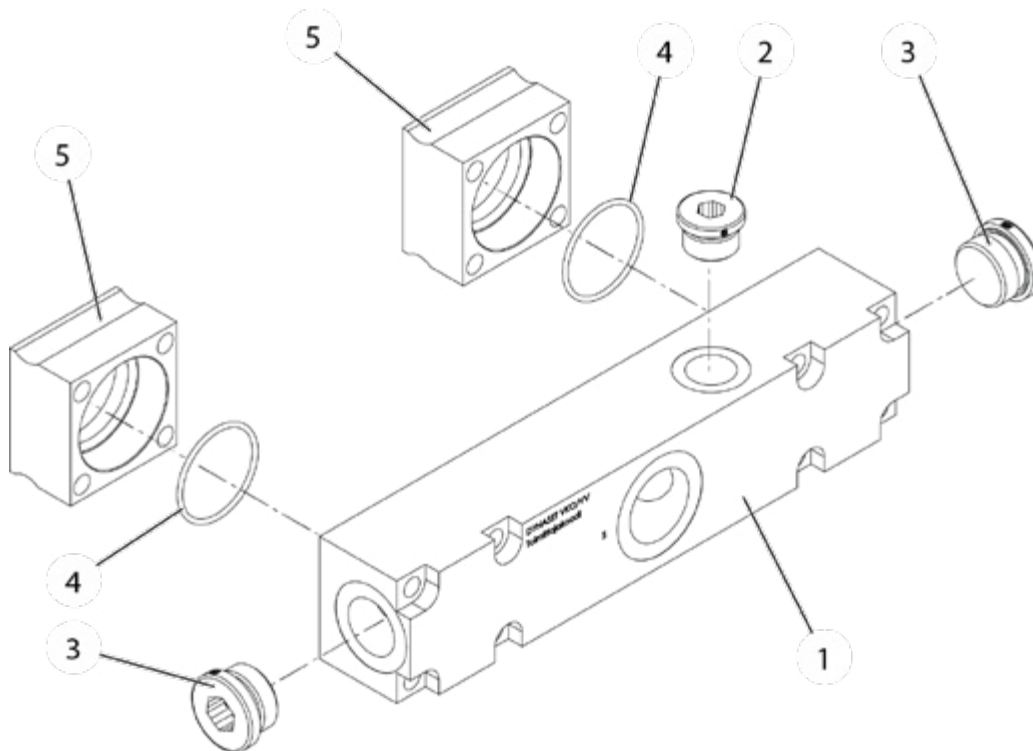
POS	PART NUMBER	QTY	DESCRIPTION	DETAILS	DETAILS 2
	V100 125 220		SEAL FLANGE KIT	Water seal flange excluded	Includes pos. 1-4
1	*	1	FLANGE BODY	d45	
2	*	1	WATER PISTON SEAL	1T	
3	*	1	WATER PISTON SEAL	2T	
4	*	1	O-RING	84,5 x 3	
5	V100 125 340	1	WATER SEAL FLANGE		
	V100 125 200		SEAL FLANGE KIT	Water seal flange included, seals excluded	Includes pos. 1, 5

\* Not sold separately. Available only in kit or assembly described above or presented in separate part list.  
Read Details 2

Seals are also available in Seal kit, see page 14.



## 6. SUCTION MANIFOLD



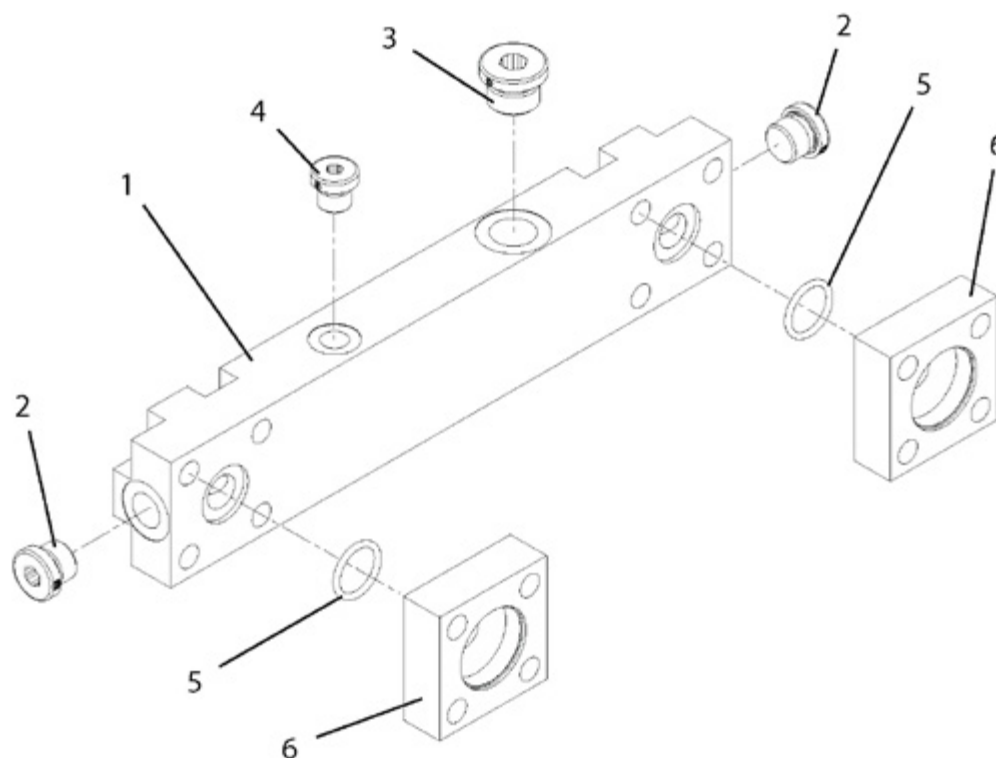
POS	PART NUMBER	QTY	DESCRIPTION	DETAILS	DETAILS 2
	<b>V100 125 020</b>		<b>SUCTION MANIFOLD KIT</b>	<b>Water valve housing excluded</b>	<b>Includes pos. 1-4</b>
1	*	1	SUCTION MANIFOLD		
2	*	1	HEXAGON SOCKET CAP PLUG	R3/4	
3	*	2	HEXAGON SOCKET CAP PLUG	R1	
4	*	2	O-RING	47,3	
5	V100 125 380	1	WATER VALVE HOUSING	Suction	Stainless steel

POS	PART NUMBER	QTY	DESCRIPTION	DETAILS	DETAILS 2
	<b>V100 125 040</b>		<b>SUCTION MANIFOLD KIT - SUB</b>	<b>Water valve housing excluded</b>	<b>Includes pos. 1-4</b>
1	*	1	SUCTION MANIFOLD		
2	*	1	HEXAGON SOCKET CAP PLUG	R3/4	Stainless steel
3	*	2	HEXAGON SOCKET CAP PLUG	R1	Stainless steel
4	*	2	O-RING		
5	V100 125 380	1	WATER VALVE HOUSING	Suction	Stainless steel

\* Not sold separately. Available only in kit or assembly described above or presented in separate part list.  
Read Details 2

Plugs are also available in Plug kit, see page 15.  
Seals are also available in Seal kit, see page 14.

## 7. PRESSURE MANIFOLD

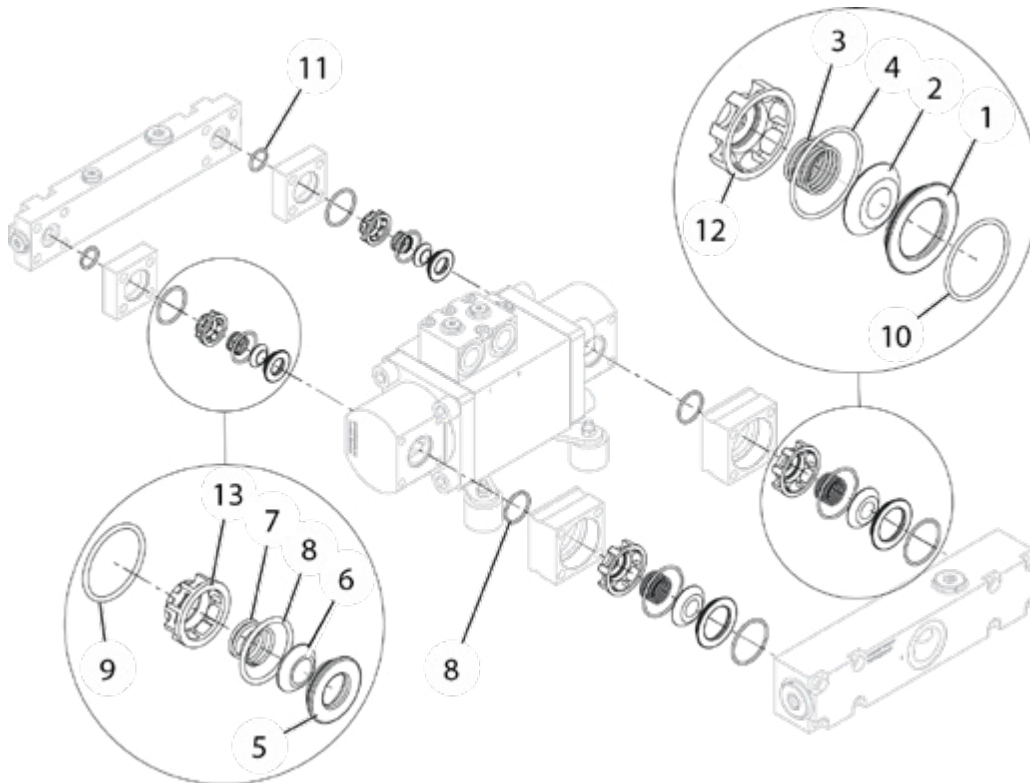


POS	PART NUMBER	QTY	DESCRIPTION	DETAILS	DETAILS 2
	<b>V100 125 080</b>		<b>PRESSURE MANIFOLD KIT</b>	<b>Water valve housing excluded</b>	<b>Includes pos. 1-5</b>
1	*	1	PRESSURE MANIFOLD		Stainless steel
2	*	2	HEXAGON SOCKET CAP PLUG	R3/8	Stainless steel
3	*	1	HEXAGON SOCKET CAP PLUG	R1/2	Stainless steel
4	*	1	HEXAGON SOCKET CAP PLUG	R1/4	Stainless steel
5	*	2	O-RING	20,3 x 2,62	
6	V100 125 400	1	WATER VALVE HOUSING	Pressure	Stainless steel

\* Not sold separately. Available only in kit or assembly described above or presented in separate part list.  
Read Details 2

Plugs are also available in Plug kit, see page 15.  
Seals are also available in Seal kit, see page 14.

## 8. WATER VALVE



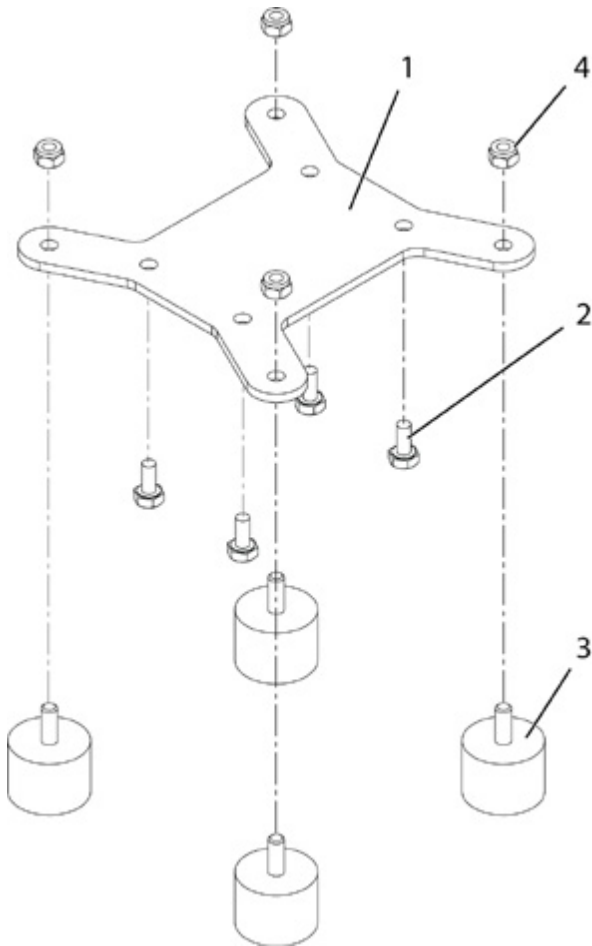
**NOTE!** The pressure valve's (7) spring has less turns than the suction valve's (3) spring.

POS	PART NUMBER	QTY	DESCRIPTION	DETAILS	DETAILS 2
	<b>V100 125 420</b>		<b>WATER VALVE KIT</b>	<b>Water valve caps excluded</b>	<b>Includes pos. 1-11</b>
1	*	2	WATER VALVE SEAT	Suction	
2	*	2	WATER VALVE DISK	Sution	
3	*	2	SPRING	Suction	
4	*	2	O-RING	53,64 x 2,62	
5	*	2	WATER VALVE SEAT	Pressure	
6	*	2	WATER VALVE DISK	Pressure	
7	*	2	SPRING	Pressure	
8	*	4	O-RING	31,42 x 2,62	
9	*	2	O-RING	37,77 x 2,62	
10	*	2	O-RING	47,3 x 2,62	
11	*	2	O-RING	20,3 x 2,62	
12	V100 125 360	1	WATER VALVE CAP	Suction	
13	V100 125 370	1	WATER VALVE CAP	Pressure	
	<b>V100 125 440</b>		<b>WATER VALVE KIT - HOT</b>	<b>Water valve caps excluded</b>	<b>Includes pos. 1-11</b>

\* Not sold separately. Available only in kit or assembly described above or presented in separate part list.  
Read Details 2

Seals are also available in Seal kit, see page 14.

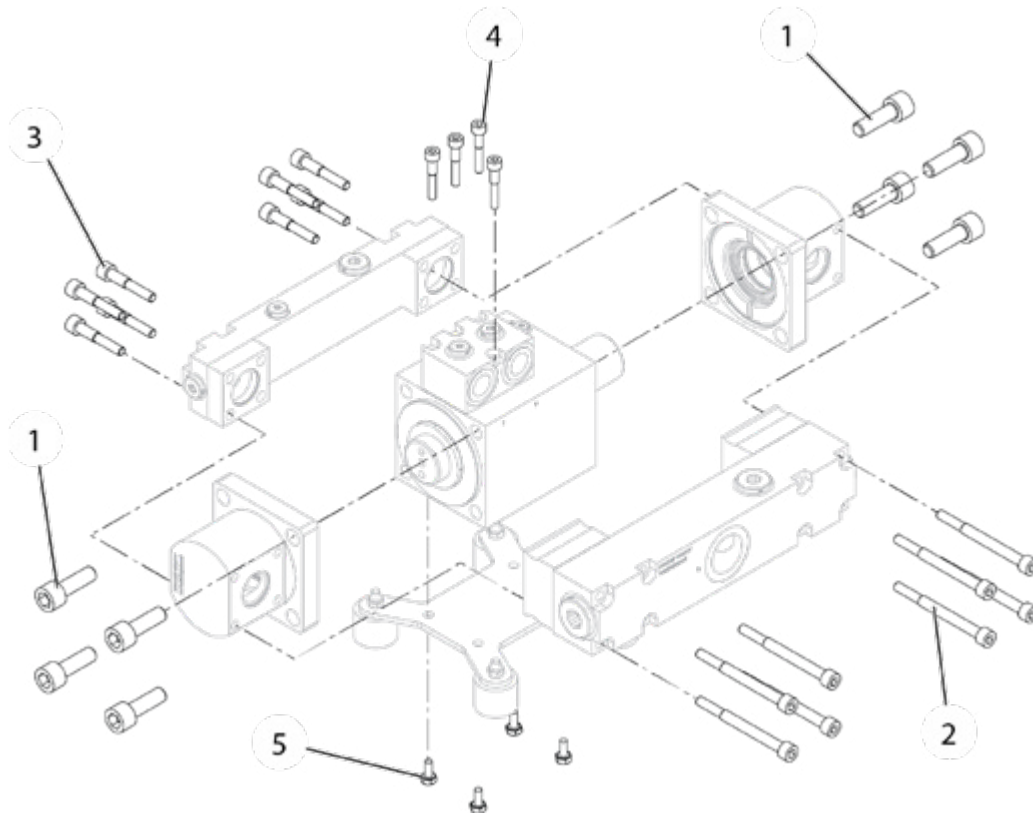
## 9. MOUNTING PLATE KIT



POS	PART NUMBER	QTY	DESCRIPTION	DETAILS	DETAILS 2
	<b>V100 102 274</b>		<b>MOUNTING PLATE KIT</b>		<b>Includes pos 1-4</b>
1	*	1	MOUNTING PLATE		
2	*	4	HEXAGON SOCKET CAP SCREW	M8x16	
3	<b>V100 100 000</b>	1	<b>RUBBER CUSHION KIT</b>		<b>Includes 4 rubber cushions</b>
4	*	4	LOCK NUT	M8	

\* Not sold separately. Available only in kit or assembly described above or presented in separate part list.  
Read Details 2

## 10. SCREW KIT



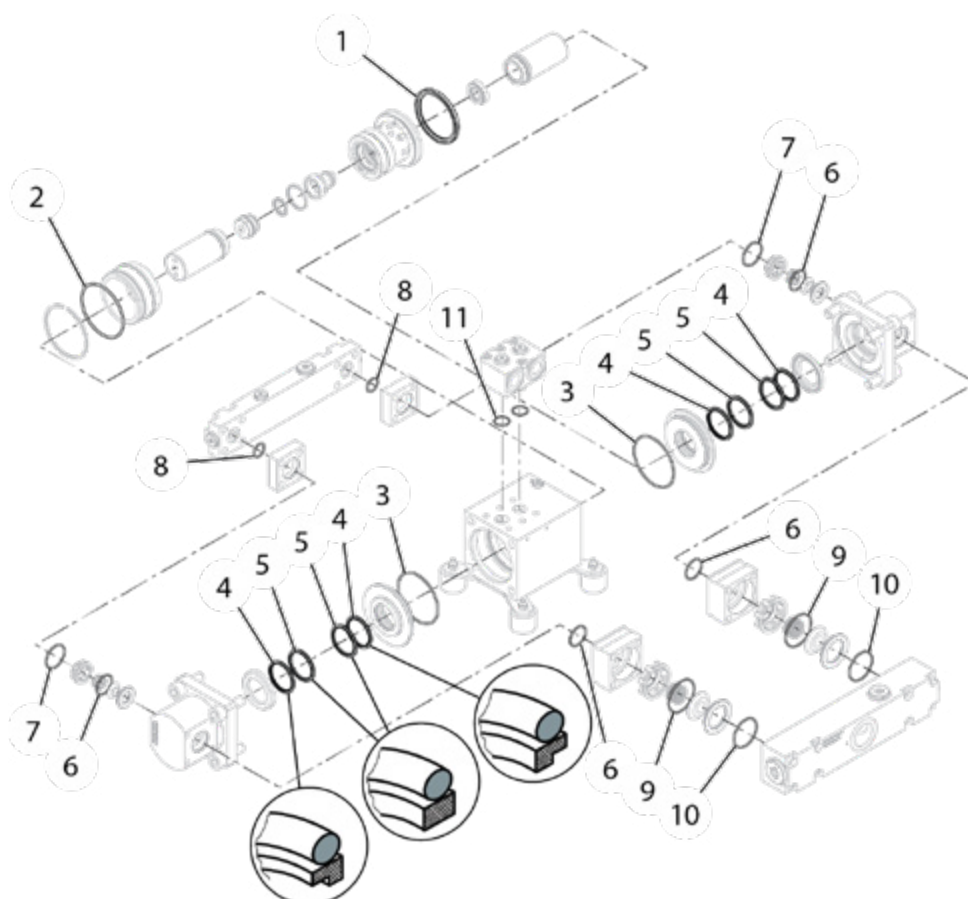
POS	PART NUMBER	QTY	DESCRIPTION	DETAILS	DETAILS 2
	<b>V100 125 160</b>		<b>SCREW KIT</b>		<b>Includes pos. 1-5</b>
1	*	8	HEXAGON SOCKET CAP SCREW	M16 x 45	
2	*	8	HEXAGON SOCKET CAP SCREW	M10 x 110	
3	*	8	HEXAGON SOCKET CAP SCREW	M10 x 55	
4	*	4	HEXAGON SOCKET CAP SCREW	M8 x 45	
5	*	4	HEXAGON HEAD SCREW	M8 x 16	

POS	PART NUMBER	QTY	DESCRIPTION	DETAILS	DETAILS 2
	<b>V100 125 180</b>		<b>SCREW KIT - SUB</b>		<b>Includes pos. 1-4</b>
1	*	8	HEXAGON SOCKET CAP SCREW	M16 x 45	Special coating
2	*	8	HEXAGON SOCKET CAP SCREW	M10 x 110	Special coating
3	*	8	HEXAGON SOCKET CAP SCREW	M10 x 55	Stainless steel
4	*	4	HEXAGON SOCKET CAP SCREW	M8 x 45	Stainless steel

\* Not sold separately. Available only in kit or assembly described above or presented in separate part list.  
Read Details 2

**! NOTE! Tightening torques can be found in user manual.**

## 11. SEAL KIT

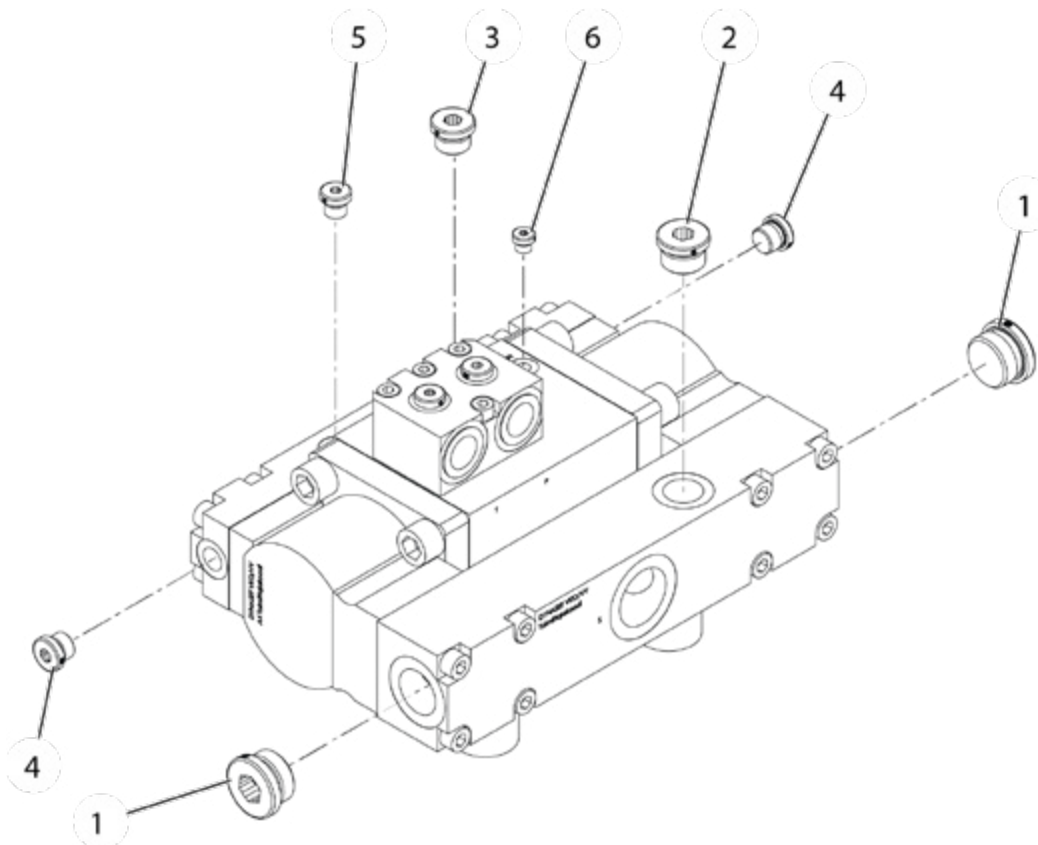


POS	PART NUMBER	QTY	DESCRIPTION	DETAILS	DETAILS 2
	V100125240		SEAL KIT		Includes pos. 1-11
1	*	1	PISTON SEAL	M90	Includes O-ring
2	*	1	O-RING	87,00 x 3,00	
3	*	2	O-RING	84,50 x 3,00	
4	*	4	PISTON SEAL	1T	Includes O-ring
5	*	4	PISTON SEAL	2T	Includes O-ring
6	*	4	O-RING	31,42 x 2,62	
7	*	2	O-RING	37,77 x 2,62	
8	*	2	O-RING	20,30 x 2,62	
9	*	2	O-RING	53,64 x 2,62	
10	*	2	O-RING	47,30 x 2,62	
11	*	2	O-RING	21,30 x 2,40	
	V100125260		SEAL KIT - SUB		Includes pos. 1-11 and 12-13
12		2	O-RING	100 x 2	
13		2	O-RING	105 x 2	

\* Not sold separately. Available only in kit or assembly described above or presented in separate part list.  
Read Details 2



## 12. PLUG KIT

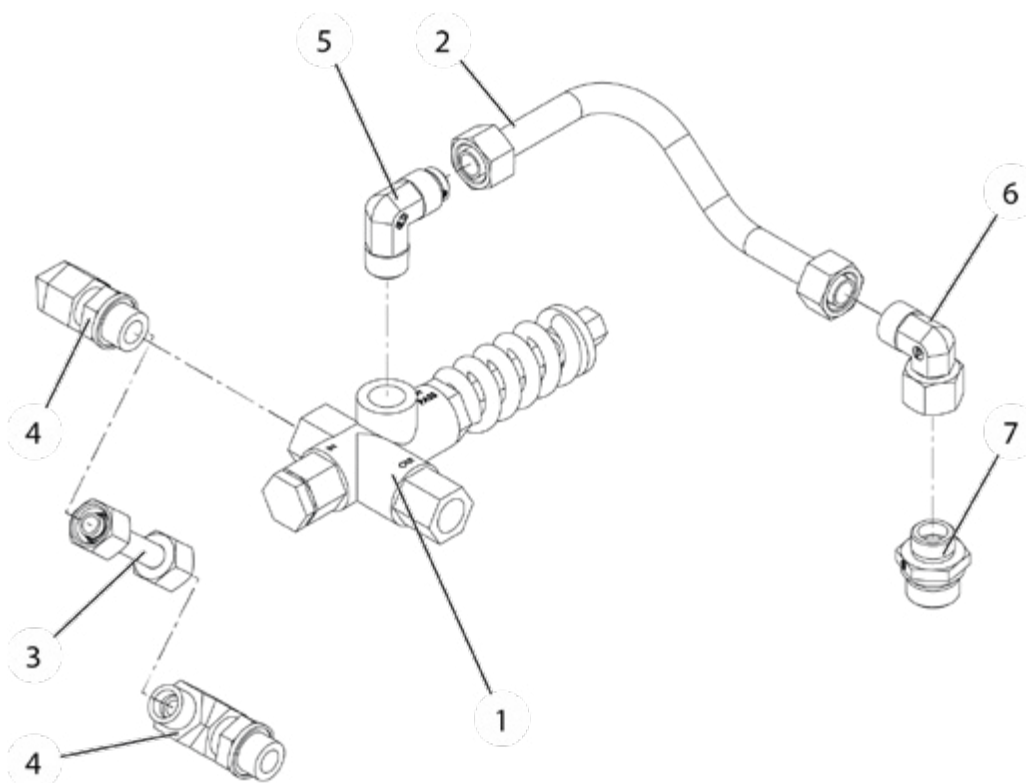


POS	PART NUMBER	QTY	DESCRIPTION	DETAILS	DETAILS 2
	<b>V100 125 300</b>		<b>PLUG KIT</b>		<b>Includes pos. 1-6</b>
1	*	2	HEXAGON SOCKET CAP SCREW	R1	
2	*	1	HEXAGON SOCKET CAP SCREW	R3/4	
3	*	1	HEXAGON SOCKET CAP SCREW	R1/2	
4	*	2	HEXAGON SOCKET CAP SCREW	R3/8	
5	*	1	HEXAGON SOCKET CAP SCREW	R1/4	
6	*	1	HEXAGON SOCKET CAP SCREW	R1/8	

POS	PART NUMBER	QTY	DESCRIPTION	DETAILS	DETAILS 2
	<b>V100 125 320</b>		<b>PLUG KIT - SUB</b>		<b>Includes pos. 1-6</b>
1	*	2	HEXAGON SOCKET CAP SCREW	R1	Stainless steel
2	*	1	HEXAGON SOCKET CAP SCREW	R3/4	Stainless steel
3	*	1	HEXAGON SOCKET CAP SCREW	R1/2	Stainless steel
4	*	2	HEXAGON SOCKET CAP SCREW	R3/8	Stainless steel
5	*	1	HEXAGON SOCKET CAP SCREW	R1/4	Stainless steel
6	*	1	HEXAGON SOCKET CAP SCREW	R1/8	Stainless steel

\* Not sold separately. Available only in kit or assembly described above or presented in separate part list.  
Read Details 2

## 13. UNLOADER VALVE



POS	PART NUMBER	QTY	DESCRIPTION	DETAILS	DETAILS 2
	<b>V100 125 480</b>		<b>UNLOADER VALVE KIT</b>		<b>Includes pos. 1-7</b>
1	V100 125 460	1	UNLOADER VALVE		
2	*	1	PIPE ASSEMBLY	Bypass	
3	*	1	PIPE ASSEMBLY	Pressure	
4	*	2	ADJUSTABLE ELBOW COUPLING	12S R1/2	Stainless steel
5	*	1	ELBOW MALE COUPLING	15L RK1/2	
6	*	1	ADJUSTABLE ELBOW COUPLING MALE	15L	
7	*	1	STRAIGHT MALE STUD COUPLING	15L R3/4	
	<b>V100 125 500</b>		<b>UNLOADER VALVE INSTALLATION KIT</b>	<b>Unloader valve excluded</b>	<b>Includes pos. 2-7</b>
	<b>V100 125 520</b>		<b>UNLOADER VALVE PIPE KIT</b>		<b>Includes. pos 2-3</b>

\* Not sold separately. Available only in kit or assembly described above or presented in separate part list.  
Read Details 2