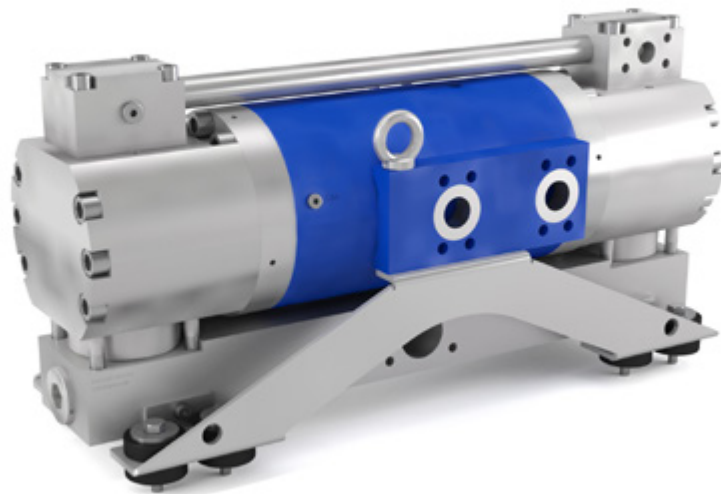




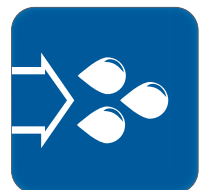
DYNASET

POWERED BY HYDRAULICS



SPARE PARTS

HYDRAULIC DRILLING FLUID PUMP



HDF 250 /250-280

HDF_250_250-280_MEA-IPL 1.0

Mobile Energy Australia
P: +61 3273 6803

39 Dulacca Street, Acacia Ridge QLD 4110 Australia
E: sales@mobileenergyaustralia.com.au

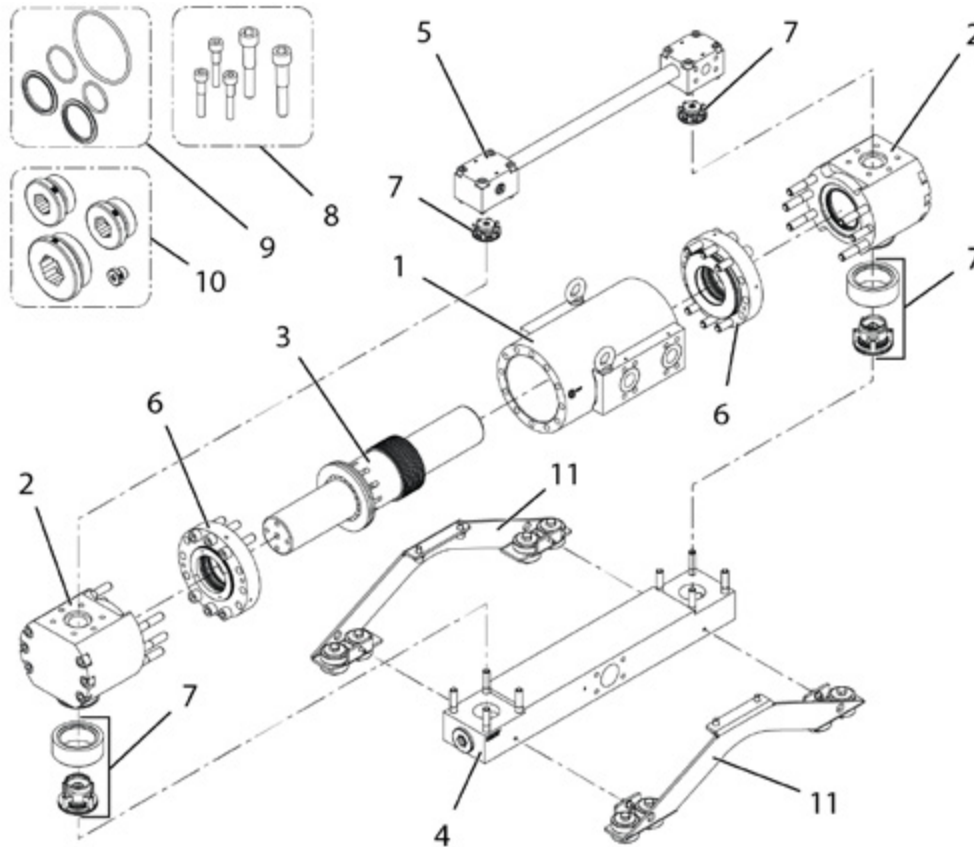
ABN 40 218 849 719
www.mobileenergyaustralia.com.au



SPARE PARTS

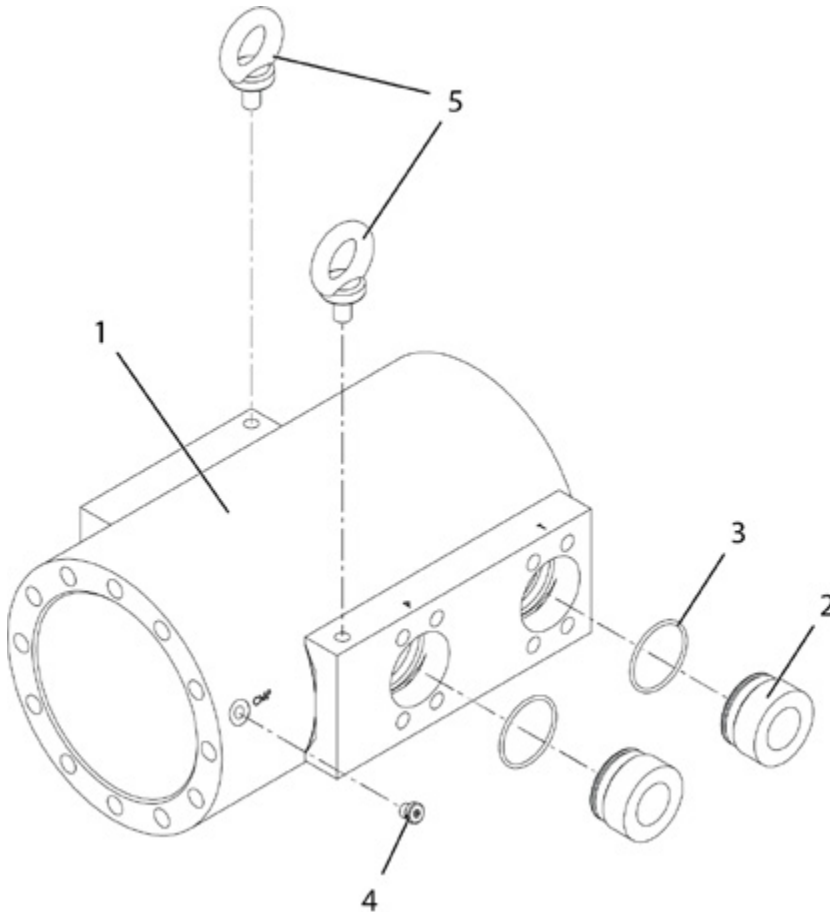
MAIN COMPONENTS	3
1. CENTER BODY	4
2. HEAD	5
3. PISTON	6
4. SUCTION MANIFOLD	7
5. PRESSURE MANIFOLD	8
6. SEAL FLANGE	9
7. WATER VALVE KIT	10
8. SCREW KIT	12
9. SEAL KIT	14
10. PLUG KIT	16
11. BRACKET KIT	17

MAIN COMPONENTS



POS	PART NUMBER	QTY	DESCRIPTION	DETAILS	DETAILS 2
1		1	CENTER BODY		See separate part list
2		2	HEAD		See separate part list
3		1	PISTON ASSEMBLY		See separate part list
4		1	SUCTION MANIFOLD		See separate part list
5		1	PRESSURE MANIFOLD		
6		2	SEAL FLANGE		See separate part list
7		2	WATER VALVE KIT		See separate part list
8			SCREW KIT		See separate part list
9			SEAL KIT		See separate part list
10			PLUG KIT		See separate part list
11		2	BRACKET KIT	Includes rubber cushions	See separate part list

1. CENTER BODY

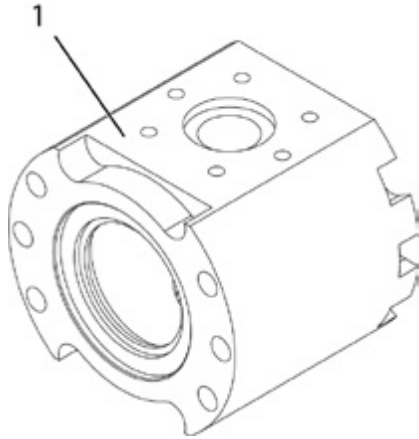


POS	PART NUMBER	QTY	DESCRIPTION	DETAILS	DETAILS 2
	V100 122 070		CENTER BODY ASSEMBLY		Includes pos. 1-5
1	*	1	CENTER BODY	M150	
2	*	2	PORT SLEEVE	M150	
3	*	2	O-RING	47,30 x 2,62	
4	*	1	HEXAGON SOCKET CAP PLUG	R1/8	Stainless steel
5	*	2	LIFTING EYE BOLT	M12	
	V100 122 170		PORT SLEEVE KIT	Kit includes 1 port sleeve and o-ring	Includes pos. 2-3
	V100 122 150		LIFTING EYE BOLT KIT	Kit includes 2 lifting eye bolts	Includes pos. 5

* Not sold separately. Available only in kit or assembly described above or presented in separate part list.
Read Details 2

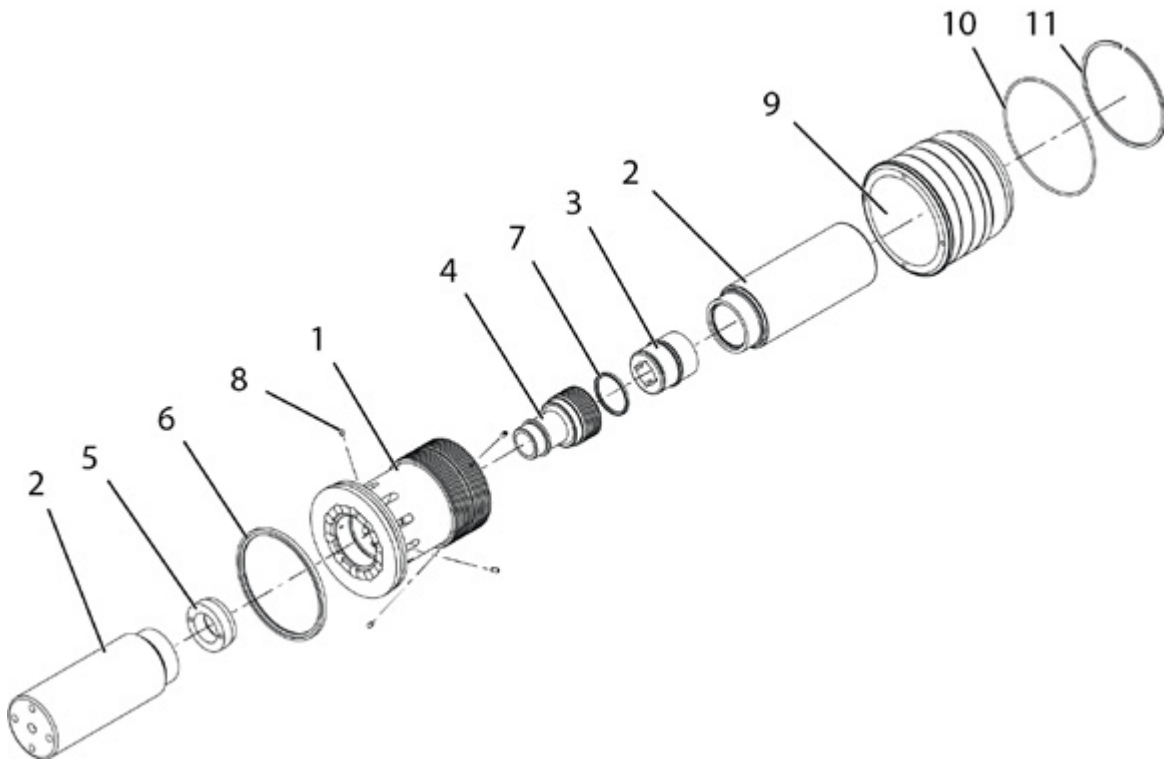
O-rings are also available in Seal kit, see page 14.
Plugs are also available in Plug kit, see page 16.

2. HEAD



POS	PART NUMBER	QTY	DESCRIPTION	DETAILS	DETAILS 2
1	V100 122 120	1	HEAD		

3. PISTON

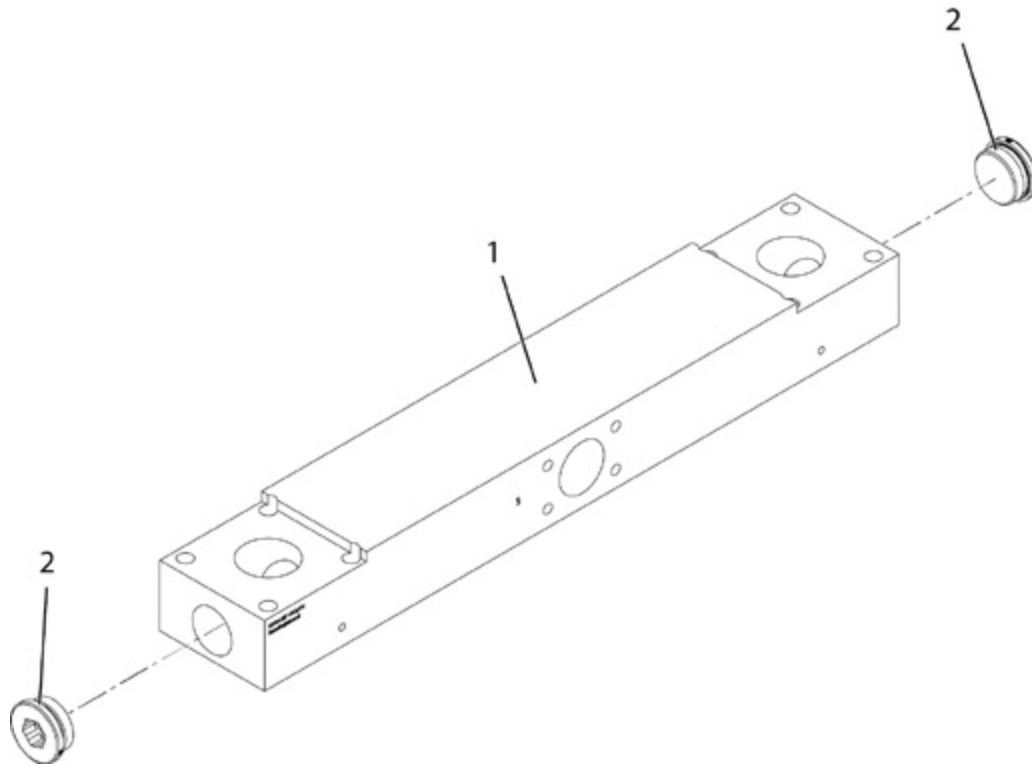


POS	PART NUMBER	QTY	DESCRIPTION	DETAILS	DETAILS 2
	V100 122 030		PISTON KIT		Includes pos. 1-11
1	*	1	HYDRAULIC PISTON		
2	V100 122 040	1	SECONDARY PISTON		Piston kit includes 2 Secondary pistons
3	*	1	REVERSAL VALVE GUIDE	D62	
4	*	1	VALVE SPOOL	M150	
5	*	1	VALVE SEAT	M150	
6	*	1	PISTON SEAL ASSEMBLY	M150	
7	*	1	PISTON SEAL ASSEMBLY	M57	
8	*	4	SET SCREW	M5 x 10	
9	*	1	CYLINDER LINER	M150	
10	*	1	O-RING	149,5 x 3	
11	*	1	LOCK RING	130 x 2,5	
	V100 122 020		HYDRAULIC PISTON KIT		Includes pos. 1, 3-6, 8-11
	V100 122 180		REVERSAL VALVE GUIDE KIT		Includes pos. 3, 7

* Not sold separately. Available only in kit or assembly described above or presented in separate part list.
Read Details 2

Seals and O-rings are also available in Seal kit, see page 14.

4. SUCTION MANIFOLD

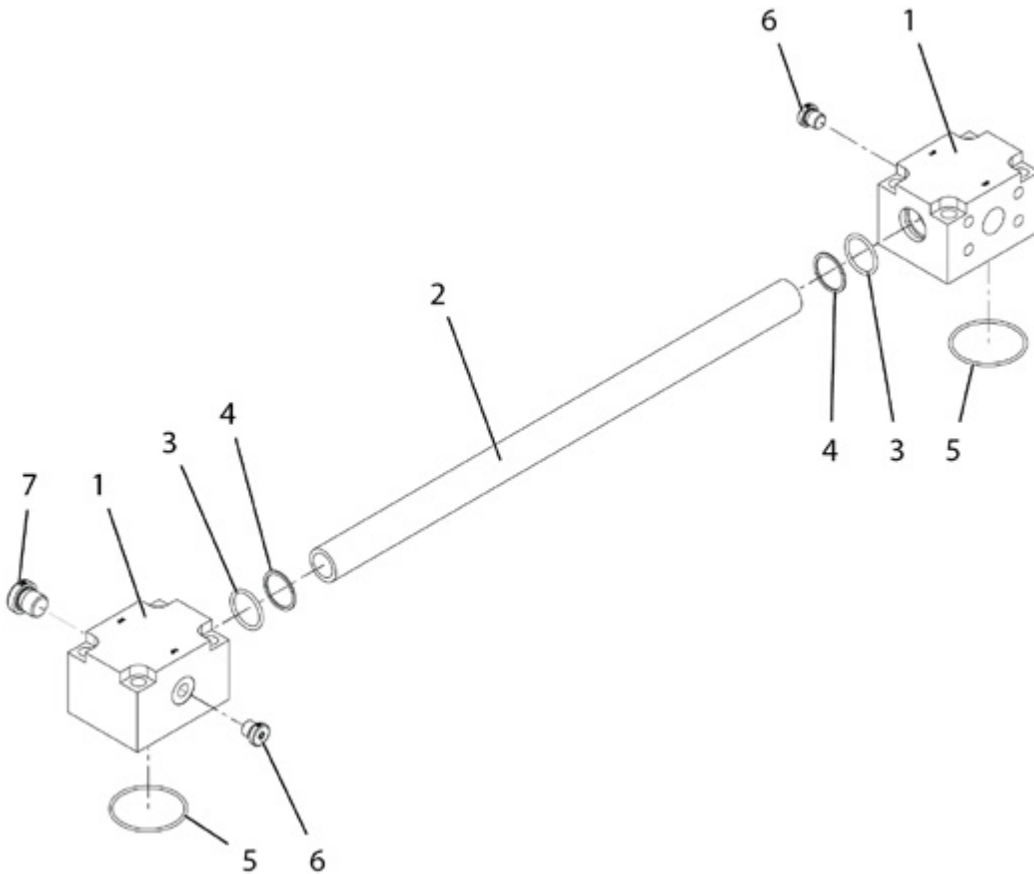


POS	PART NUMBER	QTY	DESCRIPTION	DETAILS	DETAILS 2
	V100 122 060		SUCTION MANIFOLD KIT		Includes pos. 1-2
1	*	1	SUCTION MANIFOLD	SAE 3000 3"	
2	*	2	HEXAGON SOCKET CAP PLUG	R1 1/2	Stainless steel

* Not sold separately. Available only in kit or assembly described above or presented in separate part list.
Read Details 2

Plugs are also available in Plug kit, see page 16.

5. PRESSURE MANIFOLD

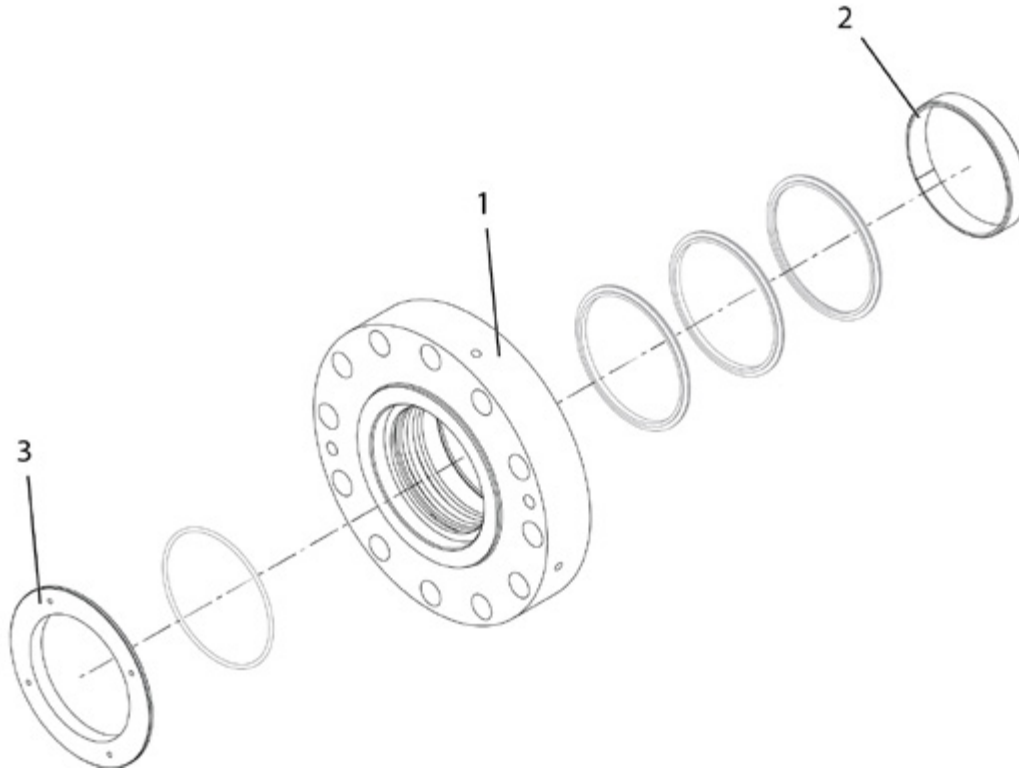


POS	PART NUMBER	QTY	DESCRIPTION	DETAILS	DETAILS 2
	V100 122 050		PRESSURE MANIFOLD KIT		Includes pos. 1-7
1	*	2	PRESSURE MANIFOLD	SAE 6000 1" AIS	
2	V100 122 200	1	PRESSURE PIPE		Stainless steel
3	*	2	O-RING	30,20 x 3	
4	*	2	SUPPORT RING	30/35	
5	*	2	O-RING	58,42 x 2,62	
6	*	2	HEXAGON SOCKET CAP PLUG	R1/4	Stainless steel
7	*	1	HEXAGON SOCKET CAP PLUG	R3/4	Stainless steel
	V100 122 190		PRESSURE BLOCK KIT	One block	Includes pos. 1, 3-6 (one of each)

* Not sold separately. Available only in kit or assembly described above or presented in separate part list.
Read Details 2

O-rings are also available in Seal kit, see page 14.
Plugs are also available in Plug kit, see page 16.

6. SEAL FLANGE

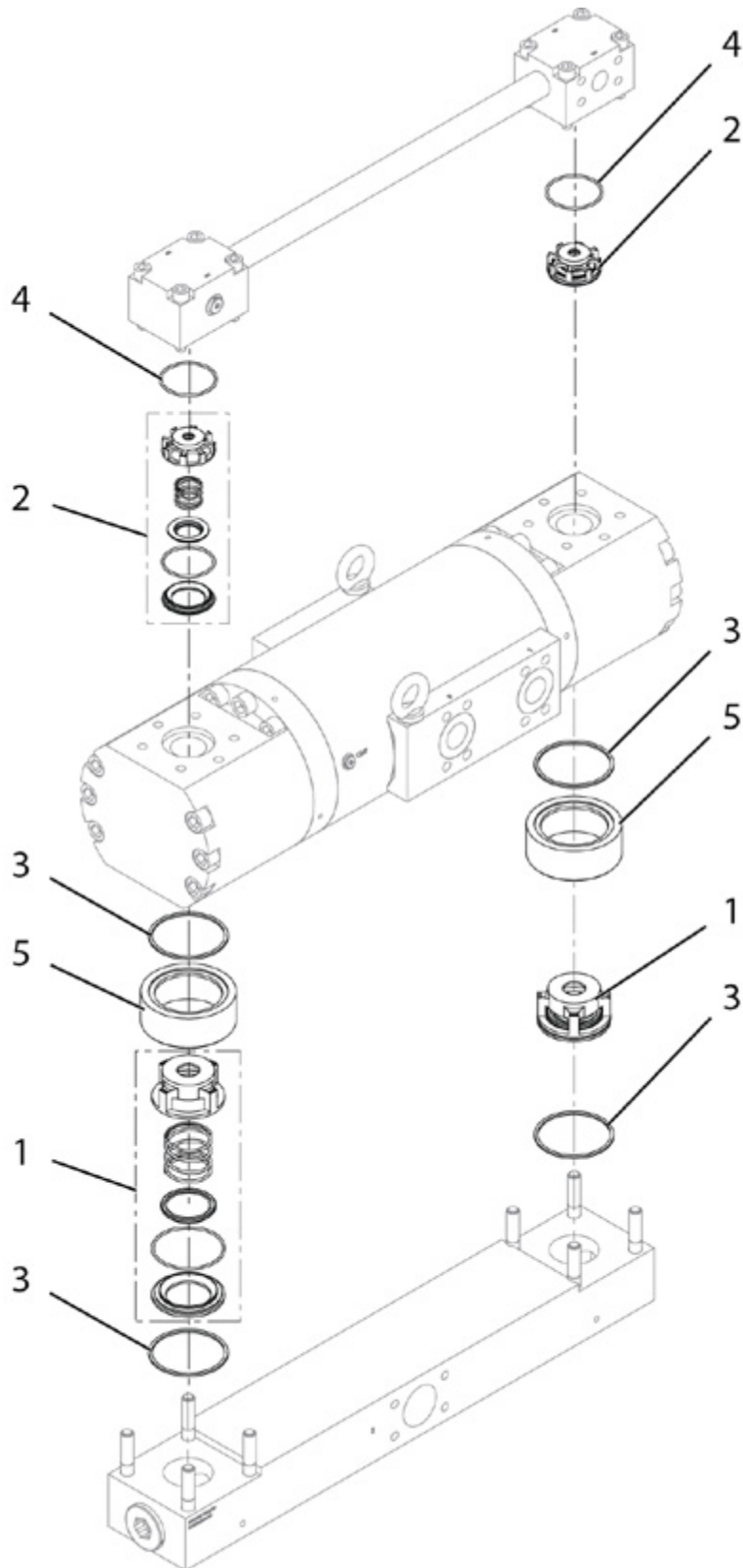


POS	PART NUMBER	QTY	DESCRIPTION	DETAILS	DETAILS 2
	V100 122 100		SEAL FLANGE KIT		Includes pos. 1-3
1	*	1	SEAL FLANGE	D200 / d85	
2	V100 122 160	1	SLIDE BEARING	D90 / d85	
3	V100 122 110	1	WATER SEAL FLANGE	D95,7 / d85	

* Not sold separately. Available only in kit or assembly described above or presented in separate part list.
Read Details 2

Seals are available in Seal kit, see page 14.

7. WATER VALVE KIT



SPARE PARTS

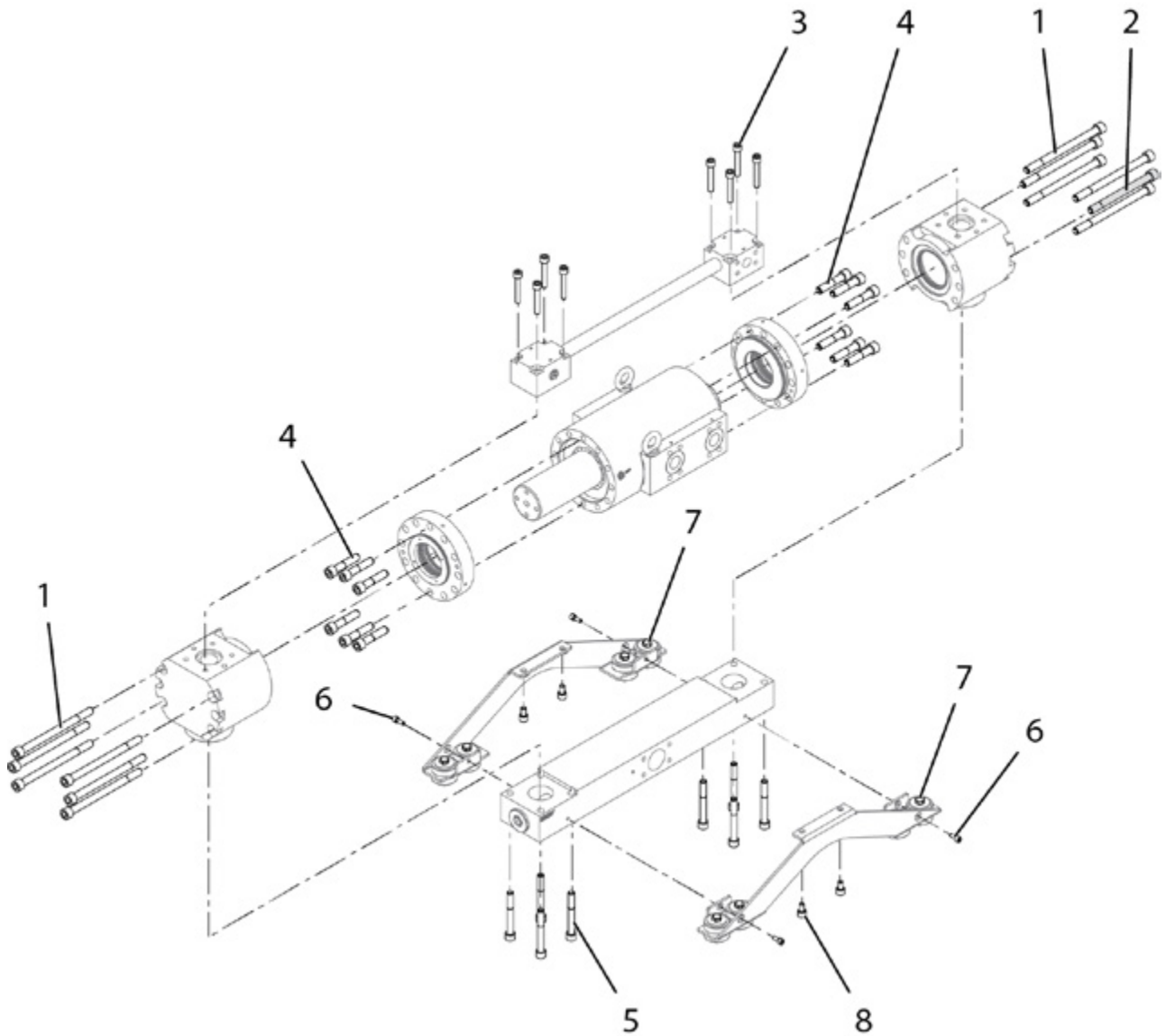
POS	PART NUMBER	QTY	DESCRIPTION	DETAILS	DETAILS 2
	V100 101 855		WATER VALVE KIT		Includes pos. 1-4
1	*	2	WATER VALVE ASSEMBLY	Suction	
2	*	2	WATER VALVE ASSEMBLY	Pressure	
3	*	4	FLANGE SEAL	D87 / d80	
4	*	2	O-RING	58,42 x 2,62	

POS	PART NUMBER	QTY	DESCRIPTION	DETAILS	DETAILS 2
5	V100 122 130	1	WATER VALVE HOUSING		

* Not sold separately. Available only in kit or assembly described above or presented in separate part list.
Read Details 2

O-rings and seals are also available in Seal kit, see page 14.

8. SCREW KIT



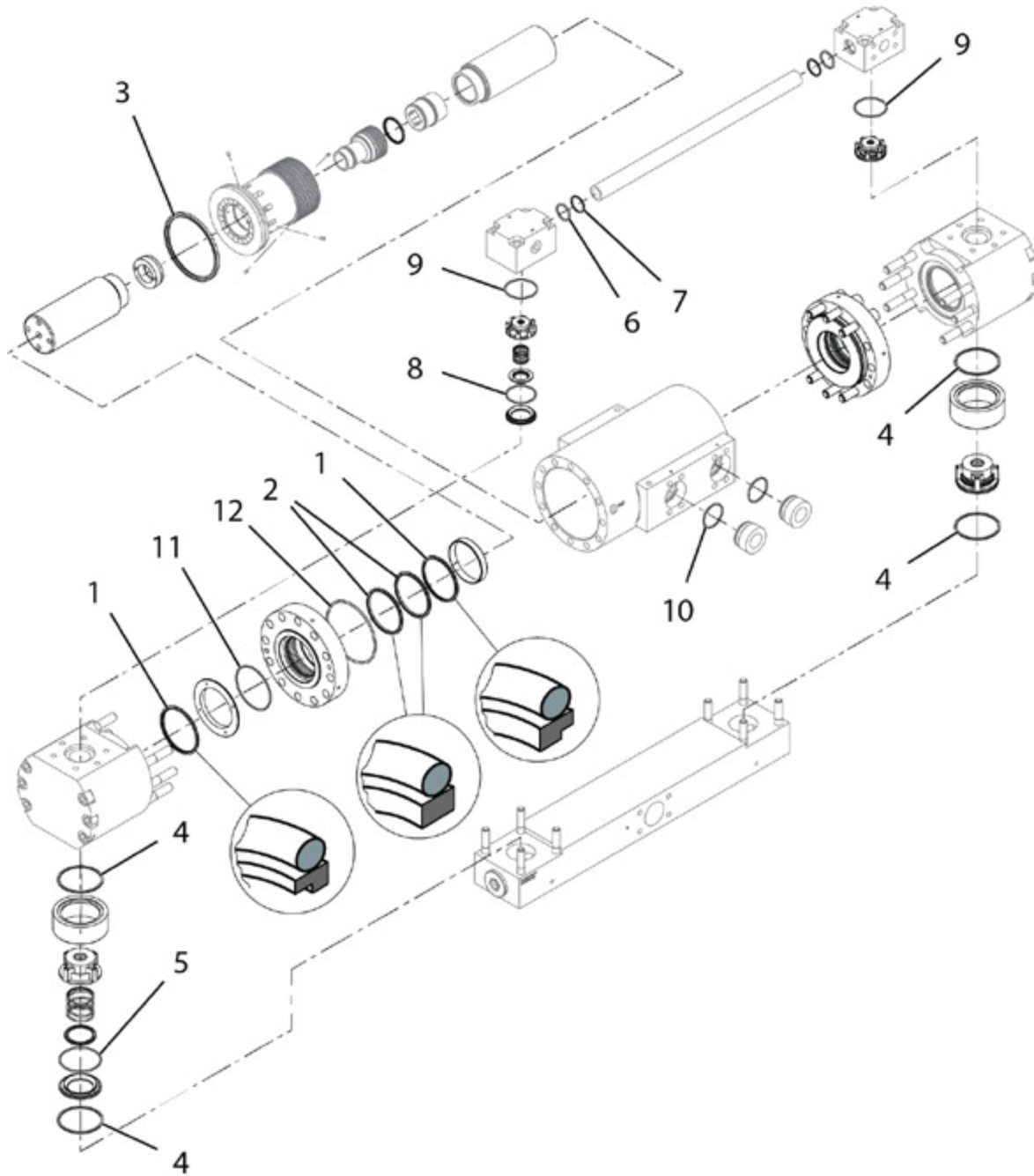
SPARE PARTS

POS	PART NUMBER	QTY	DESCRIPTION	DETAILS	DETAILS 2
	V100 122 000		SCREW KIT		Includes pos 1-8
1	*	11	HEXAGON SOCKET CAP SCREW	M16 x 220	
2	*	1	HEXAGON SOCKET CAP SCREW	M16 x 200	NOTE! Tightening torque is 150 Nm
3	*	8	HEXAGON SOCKET CAP SCREW	M12 x 70	
4	*	12	HEXAGON SOCKET CAP SCREW	M16 x 75	
5	*	8	HEXAGON SOCKET CAP SCREW	M14 x 110	
6	*	4	HEXAGON SOCKET CAP SCREW	M8 x 20	
7	*	8	HEXAGON HEAD SCREW	M12 x 60	
8	*	4	HEXAGON SOCKET CAP SCREW	M12 x 20	

* Not sold separately. Available only in kit or assembly described above or presented in separate part list.
Read Details 2

! NOTE! Tightening torques can be found in user manual.

9. SEAL KIT

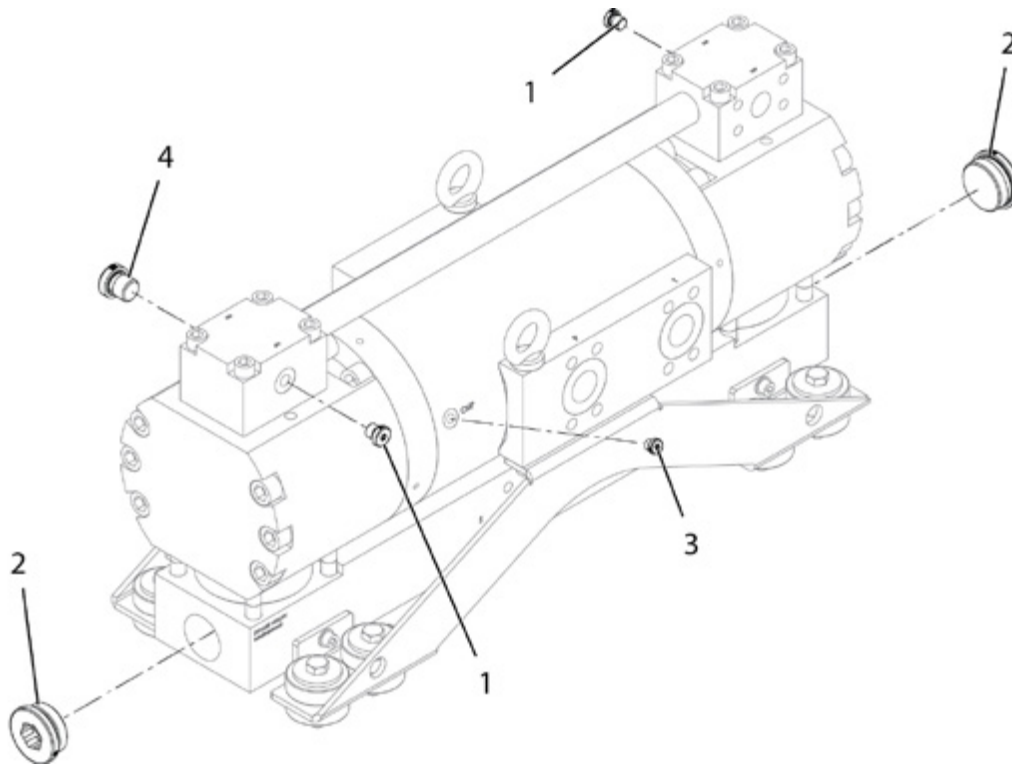


SPARE PARTS

POS	PART NUMBER	QTY	DESCRIPTION	DETAILS	DETAILS 2
	V100 101 850		SEAL KIT		Includes pos. 1-12
1	*	4	ROD SEAL	1T	Includes o-ring
2	*	4	ROD SEAL	2T	Includes o-ring
3	*	1	PISTON SEAL ASSEMBLY	M150	
4	*	4	FLANGE SEAL	D87 / d80	
5	*	2	SUPPORT RING	30 / 35	
6	*	2	O-RING	75,87 x 2,62	
7	*	2	O-RING	47,30 x 2,62	
8	*	2	O-RING	53,64 x 2,62	
9	*	2	O-RING	58,42 x 2,62	
10	*	2	O-RING	88,57 x 2,62	
11	*	2	O-RING	30,2 x 3	
12	*	2	O-RING	144,5 x 3	

* Not sold separately. Available only in kit or assembly described above or presented in separate part list.
Read Details 2

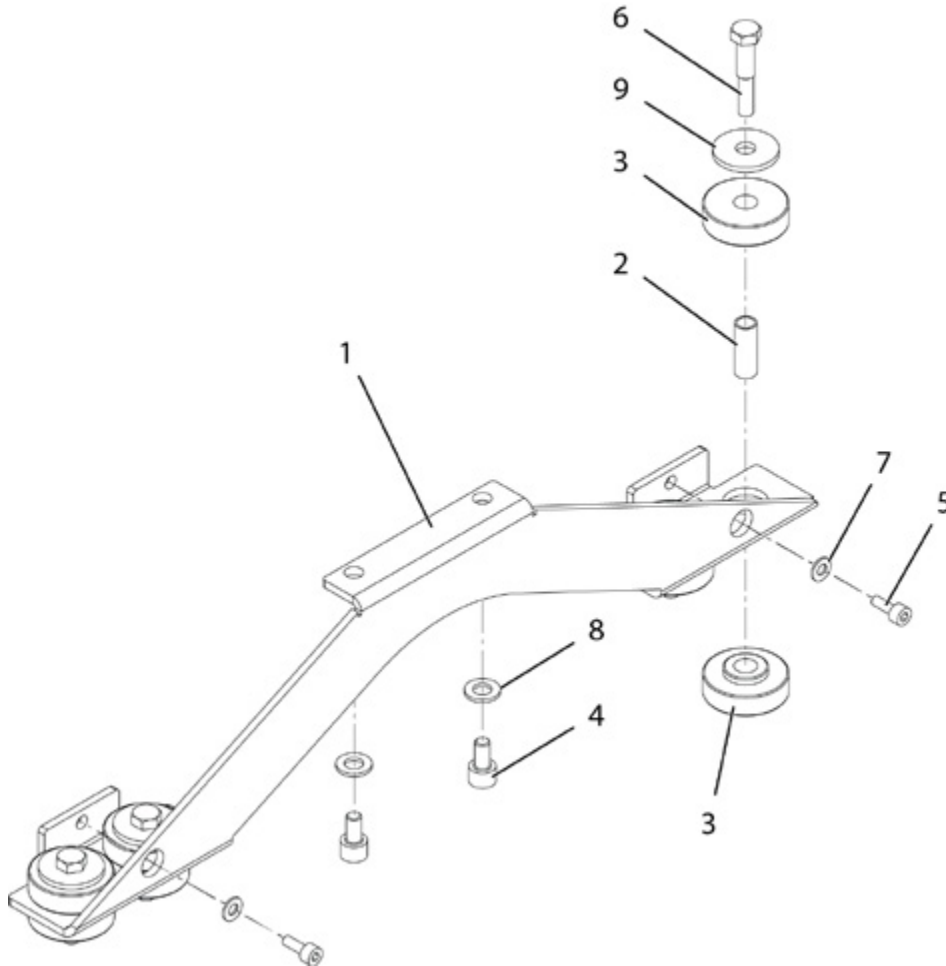
10. PLUG KIT



POS	PART NUMBER	QTY	DESCRIPTION	DETAILS	DETAILS 2
	V100 122 010		PLUG KIT		Includes pos. 1-4
1	*	2	HEXAGON SOCKET CAP PLUG	R1/4	Stainless steel
2	*	2	HEXAGON SOCKET CAP PLUG	R1 1/2	Stainless steel
3	*	1	HEXAGON SOCKET CAP PLUG	R1/8	Stainless steel
4	*	1	HEXAGON SOCKET CAP PLUG	R3/4	Stainless steel

* Not sold separately. Available only in kit or assembly described above or presented in separate part list.
Read Details 2

11. BRACKET KIT



POS	PART NUMBER	QTY	DESCRIPTION	DETAILS	DETAILS 2
	V100 122 080		BRACKET KIT	M150	Includes pos. 1-9
1	*	1	BRACKET		
2	*	4	BUSHING	15 x 1,5	
3	*	8	RUBBER SLEEVE	57/16	
4	*	2	HEXAGON SOCKET CAP SCREW	M8 x 20	
5	*	2	HEXAGON SOCKET CAP SCREW	M12 x 20	
6	*	4	HEXAGON HEAD SCREW	M12 x 60	
7	*	2	WASHER	A8,4	
8	*	2	WASHER	A13	
9	*	4	WASHER	A13,5	
	V100 122 090		RUBBER CUSHION KIT		Includes pos. 2-3, 6, 9 (2 sets of each)

* Not sold separately. Available only in kit or assembly described above or presented in separate part list.
Read Details 2

Screws are also available in Screw kit, see page 12.