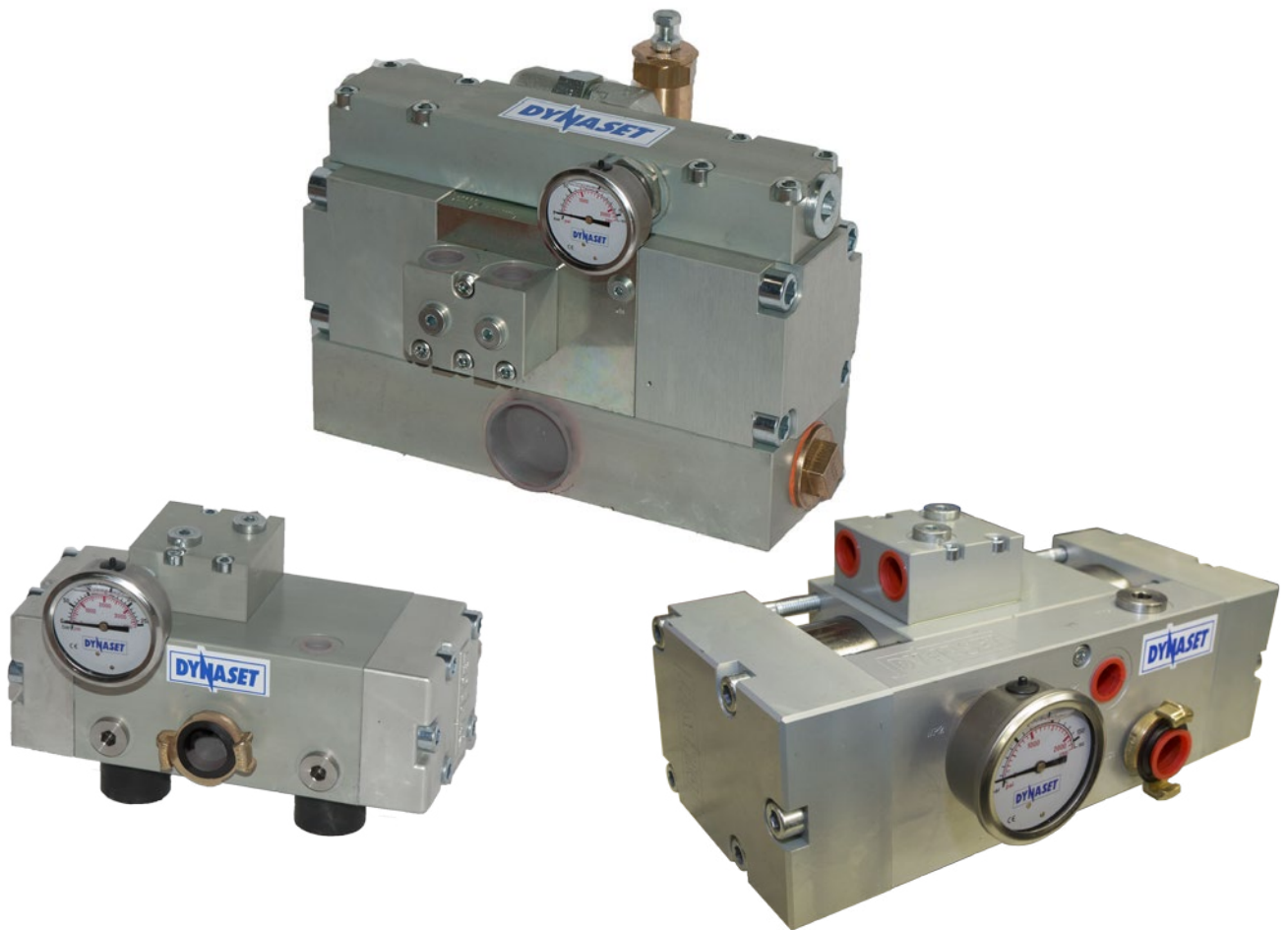




MEEA
MOBILE ENERGY AUSTRALIA
Specialists in vehicle mounted compressor & generator systems



DATA SHEET

HYDRAULIC DRILLING FLUID PUMP

HDF 40 /40-8

HDF 180 /23-35

HDF 90 /150-85

HDF 200 /40-55

HDF 160 /70-90

HDF 200 /250-280

HDF_Data_Sheet_MEA-V.B 1.0

Mobile Energy Australia
P: +61 3273 6803

39 Dulacca Street, Acacia Ridge QLD 4110 Australia
E: sales@mobileenergyaustralia.com.au

ABN 40 218 849 719
www.mobileenergyaustralia.com.au



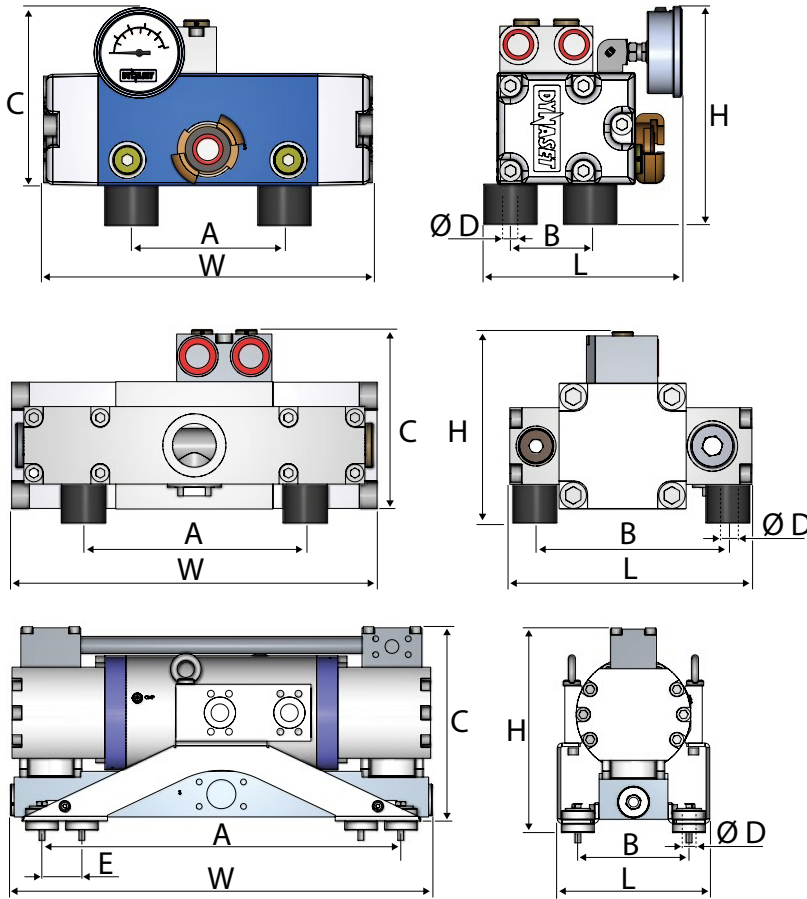
HYDRAULIC DRILLING FLUID PUMP

DYNASET HDF hydraulic drilling fluid pump transforms the hydraulic power of a work machine effectively into pumping power. Because of high pressure, the pump gives great pumping power with a small amount of pumping fluid. To ease up the use of the pump; pump is self-priming, requiring no feed pressure.

Small size, light weight, durable construction and low pumping fluid consumption make the HDW pump very cost effective. The patented design of the pump is completely free of rotating parts. Because of the compact size it can be installed practically in any space in the work machine. The power range of pumps available covers all needs.



DIMENSIONS



MODEL	DIMENSIONS, mm (in)								WEIGHT kg (lbs)
	L	W	H	A	B	C	D	E	
HDF 40 /40-8	190 (7.5)	315 (12.4)	170 (6.7)	90 (3.5)	80 (3.1)	140 (5.5)	M8	-	8 (17.6)
HDF 90 /150-85	175 (6.9)	345 (13.6)	250 (9.8)	252 (9.9)	95 (3.7)	250 (9.8)	M10	-	30 (66.1)
HDF 160 /70-90	220 (8.7)	330 (13.0)	180 (7.1)	200 (7.9)	175 (6.9)	160 (6.3)	M10	-	28 (61.7)
HDF 180 /23-35	160 (6.3)	245 (9.6)	165 (6.5)	135 (5.3)	60 (2.4)	135 (5.3)	M8	-	8 (17.6)
HDF 200 /40-55	170 (6.7)	280 (11.0)	185 (7.3)	126 (4.7)	106 (4.2)	153 (6.0)	M8	-	18 (39.6)
HDF 200 /250-280	270 (10.6)	745 (29.3)	360 (14.2)	630 (24.8)	194 (7.5)	340 (13.4)	16 (0.6)	70 (2.8)	170 (374.8)

PARAMETERS

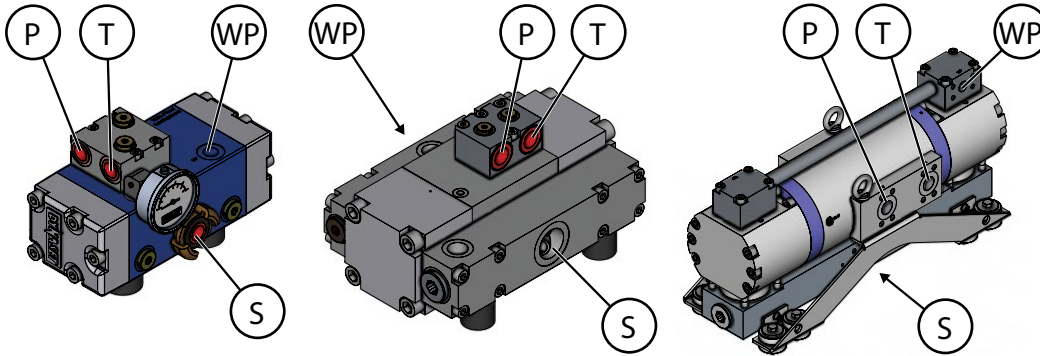
		HDF 40 /40-8	HDF 180 /23-35	HDF 200 /40-55
DISCHARGE CHARACTERISTICS				
Pumping fluid flow max.	l/min (gal)	40 (10.55)	23 (6.07)	40 (10.55)
Pressure max.	bar (psi)	40 (580)	180 (2611)	200 (2901)
Power	kW	2,6	7	13
Fluid/hydraulic pressure ratio		0,2	1,18	1,26
HYDRAULIC POWER REQUIREMENTS				
Oil flow max.	l/min (gpm)	8 (2.11)	35 (9.25)	55 (14.55)
Operating pressure	Δp . bar (psi)	190 (2756)	190 (2756)	190 (2756)
Pressure max.	bar (psi)	210 (3046)		
PUMPING FLUID REQUIREMENTS				
Suction head max	m (ft)	3 (9.8)		
Feed pressure	bar (psi)	-0,3...16 (-43.5...232)		
Water filter	mesh	min. 80		
HYDRAULIC FLUID REQUIREMENTS				
Viscosity	cSt	10-200 / optimum 25-35		
Temperature	° C (° F)	max. 70 (158)		
Filter ratio, recommendation	μm	min. 25		
Cooling capacity requirement	kW	2	2	3

Gallons are U.S. liquid gallons

		HDF 160 /70-90	HDF 90 /150-85	HDF 200 /250-280
DISCHARGE CHARACTERISTICS				
Pumping fluid flow max.	l/min (gal)	70 (18.44)	150 (39.66)	250 (66.00)
Pressure max.	bar (psi)	160 (2321)	90 (1305)	200 (2901)
Power	kW	19	23	85
Fluid/hydraulic pressure ratio		1,12	0,52	1,06
HYDRAULIC POWER REQUIREMENTS				
Oil flow max.	l/min (gpm)	90 (23.77)	85 (22.44)	280 (73.99)
Operating pressure	Δp . bar (psi)	180 (2611)	190 (2756)	190 (2756)
Pressure max.	bar (psi)	210 (3046)		
PUMPING FLUID REQUIREMENTS				
Suction head max	m (ft)	3 (9.8)		
Feed pressure	bar (psi)	-0,3...16 (-43.5...232)		
Water filter	mesh	min. 80		
HYDRAULIC FLUID REQUIREMENTS				
Viscosity	cSt	10-200 / optimum 25-35		
Temperature	° C (° F)	max. 70 (158)		
Filter ratio, recommendation	μm	min. 25		
Cooling capacity requirement	kW	6	4	20

Gallons are U.S. liquid gallons

CONNECTION PORTS



MODEL	PRESSURE LINE	RETURN LINE	SERVICE LINE	WATER OUTPUT	WATER INPUT
	P	T	CMP	WP	S
HDF 40 /40-8	BSP 1/2"	BSP 1/2"	-	BSP 1/2"	BSP 3/4"
HDF 90 /150-85	BSP 3/4"	BSP 3/4"	BSP1/8"	BSP 1"	BSP 2"
HDF 160 /70-90	BSP 3/4"	BSP 3/4"	BSP1/8"	BSP 3/4"	BSP 1 1/4"
HDF 180 /23-35	BSP 1/2"	BSP 1/2"	-	BSP 3/8"	BSP 3/4"
HDF 200 /40-55	BSP 3/4"	BSP 3/4"	-	BSP 1/2"	BSP 1"
HDF 200 /250-280	SAE 6000 1 1/4"	SAE 6000 1 1/4"	BSP1/8"	SAE 6000 1" (BSP 3/4")	SAE 3000 2"